

The Corporation of the City of Pickering

By-law No. 8196/25

Being a by-law to change the ward boundaries in the City of Pickering

Whereas Section 222(1) of the *Municipal Act*, S.O. 2001, c. 25, as amended (the “Act”), provides authority for a municipality to divide or redivide the municipality into wards or to dissolve the existing wards;

And Whereas at its Special Meeting held on July 15, 2025, the Council of The Corporation of the City of Pickering approved changes to the ward boundaries in the City of Pickering;

Now therefore the Council of The Corporation of the City of Pickering hereby enacts as follows:

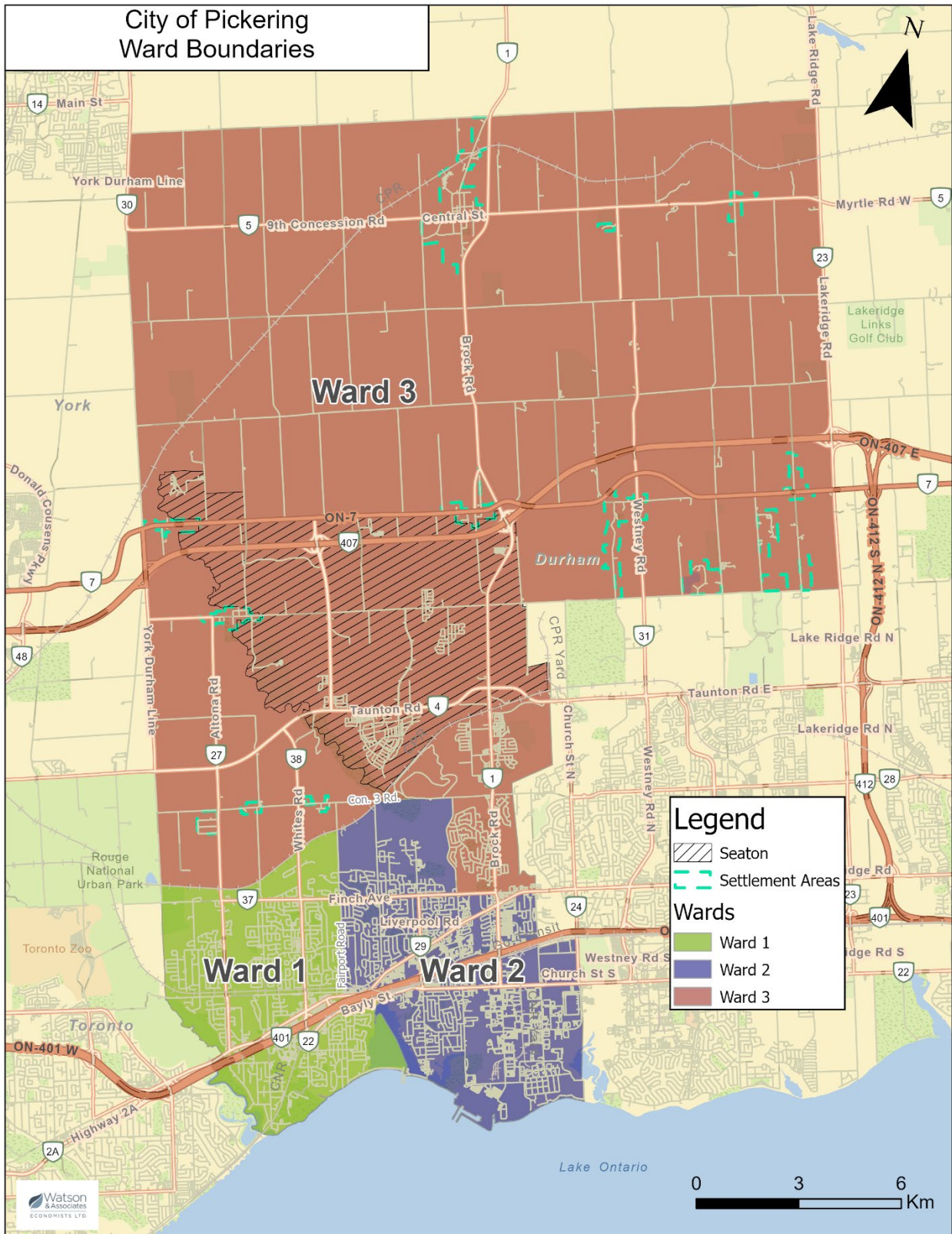
1. That the ward boundaries, as shown and described in Schedule “A”, attached hereto and forming part of this by-law are hereby approved;
2. That pursuant to Section 222(8) of the Act, the new ward boundaries shall come into force on the day the new Council of The Corporation of the City of Pickering is organized following the 2026 Municipal Election provided that:
 - (i) no notices of appeal are filed;
 - (ii) notices of appeal are filed and are all withdrawn before January 1, 2026; or,
 - (iii) notices of appeal are filed, and the Ontario Land Tribunal issues an order to affirm or amend the by-law before January 1, 2026;
3. That pursuant to Section 222(9) of the Act, the 2026 Municipal Election shall be conducted as if the by-law was already in force; and,
4. That By-law 7875/21 is hereby repealed.

By-law passed this 15th day of July, 2025.

Kevin Ashe, Mayor

Susan Cassel, City Clerk

Schedule "A" to By-law 8196/25 - Ward Boundary Descriptions



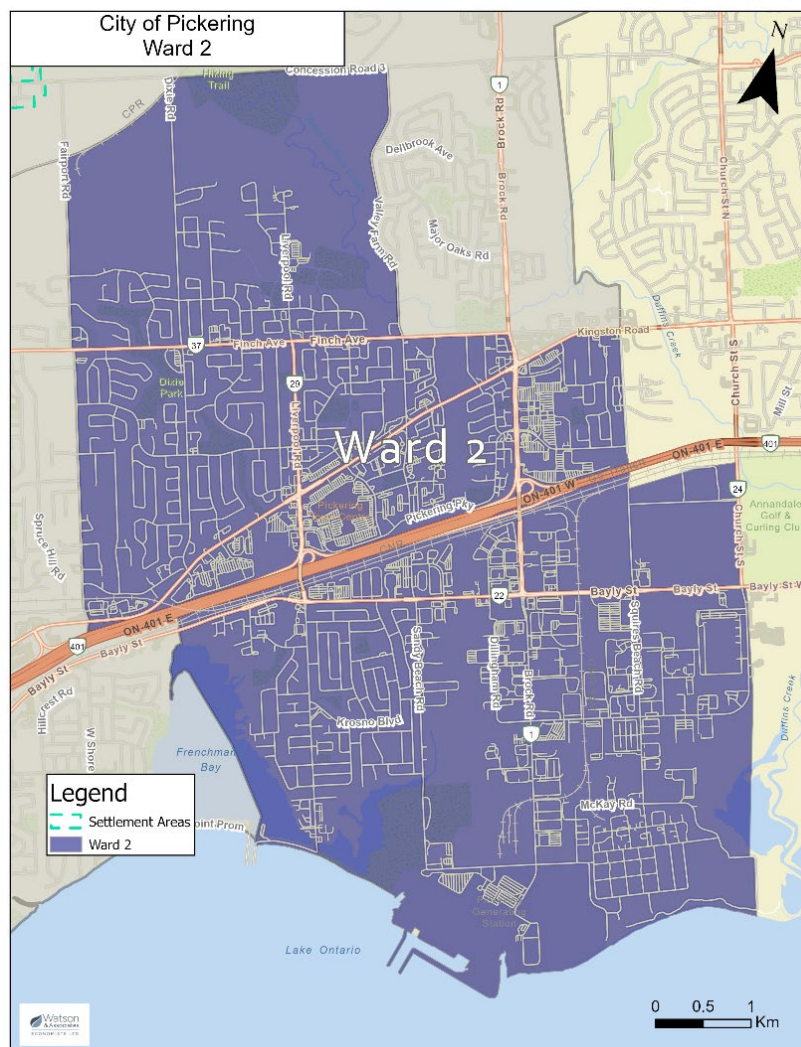
Ward 1

Beginning where the centre line of the Canadian Pacific rail line crosses the centre line of York-Durham Line (that is, where the City of Pickering municipal boundary meets the municipal boundary of the City of Toronto), then in an easterly direction along the centre line of the Canadian Pacific rail line to the centre line of Fairport Road, then in a southerly direction along the centre line of Fairport Road to Highway 401, then in an easterly direction along the centre line of Highway 401 to the intersection of where the CNR crosses the 401. From this point, in a southeasterly direction along a line drawn to Frenchman's Bay and across Frenchman's Bay to the gap in the sandspit that separates the Bay from Lake Ontario, then in a westerly direction along the City of Pickering municipal boundary in Lake Ontario to the Rouge River (the municipal boundary with the City of Toronto), then in a northwestern direction along the Rouge River (the municipal boundary with the City of Toronto) to Twyn Rivers Drive then in a northern direction along the centre line of Scarborough-Pickering Townline to the point of origin.



Ward 2

Beginning where the centre line of the Canadian Pacific rail line crosses the centre line of Fairport Road, then in a northeasterly direction along the centre line of the Canadian Pacific rail line to the centre line of Third Concession Road east, then in an easterly direction along the centre line of Third Concession Road to the centre line of Valley Farm Road. Following the centre line of Valley Farm Road in a southerly direction to the centre line of Finch Avenue, then in an easterly direction along the centre line of Finch Avenue to the centre line of Brock Road, then in a southerly direction along the centre line of Brock Road to the centre line of Kingston Road (Highway 2), then in an easterly direction along the centre line of Kingston Road (Highway 2) to the municipal boundary between City of Pickering and the Town of Ajax, then in a southerly and easterly direction along the City of Pickering municipal boundary with the Town of Ajax to the City of Pickering municipal boundary in Lake Ontario, then westerly along the City of Pickering municipal boundary in Lake Ontario to the gap in the sandspit that separates the Frenchman's Bay from Lake Ontario, then in a northwesterly direction along a line drawn from that point to the end of a line drawn from Frenchman's Bay to Highway 401, where the CNR intersect. Following in a westerly direction along Highway 401 to the centre line of Fairport Road, then in a northerly direction along the centre line of Fairport Road to the point of origin at the Canadian Pacific rail line.



Ward 3

Beginning where the centre line of Uxbridge Pickering Townline Road meets the centre line of Regional Road 30 (York Durham Line), then in an easterly direction along the centre line of Uxbridge Pickering Townline Road (the municipal boundary of the City of Pickering with the Township of Uxbridge) to where it meets the centre line of Lake Ridge Road (the eastern municipal boundary of the City of Pickering with the Township of Scugog), then in a southerly direction along municipal boundary of the City of Pickering with the Town of Whitby to the northern municipal boundary of the Town of Ajax, then in a westerly and southerly direction along the municipal boundary with the Town of Ajax to the centre line of Kingston Road (Highway 2), then in a westerly direction along the centre line of Kingston Road (Highway 2) the centre line of Brock Road, then in a northerly direction along the centre line of Brock Road to the centre line of Finch Avenue, then in a westerly direction along the centre line of Finch Avenue to the centre line of Valley Farm Road, then in a northerly direction along the centre line of Valley Farm Road to the line of Third Concession Road, then in a westerly direction along the centre line of Third Concession Road to the centre line of the Canadian Pacific rail line, then in a southwesterly direction along the centre line of the Canadian Pacific rail line to the centre line of Scarborough-Pickering Townline, then in a northerly direction along the centre line of Regional Road 30 (York Durham Line) to the point of origin.

